

GRAPHISOFT Learn™ BIM CLASSES

ARCHICAD BIM WORKFLOW

UNDERSTAND THE COMPLETE BIM
WORKFLOW USING Archicad THROUGHOUT
ALL DESIGN STAGES!

A REAL BIM PROJECT

To build a successful BIM Project, we must clearly define key aspects of the project workflow. Who are the stakeholders? What are the deliverables, and how should they be delivered? What model content is needed for each project stage? During this training, we will define and develop all project goals, responsibilities and deliverables, just like in a real BIM project.

TRAINING OBJECTIVES

The goal of this training is to provide a formal workflow to guide users developing a real BIM Project – from using surveyors' data all the way through delivery of project documentation at the construction site, while collaborating with other disciplines along the way.

WHO SHOULD ATTEND?

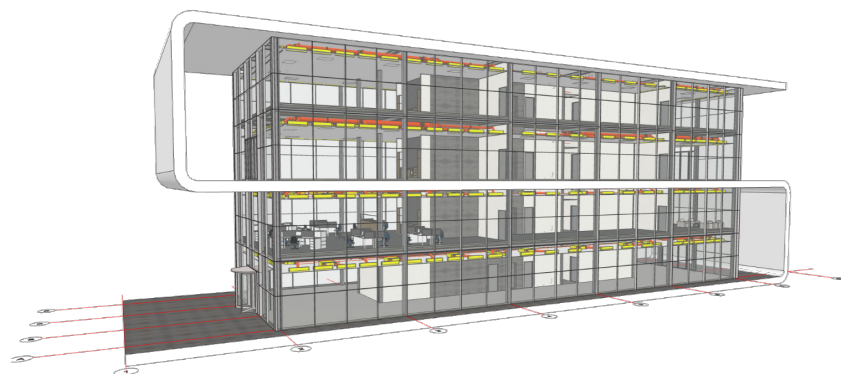
Users who are familiar with Archicad modeling, documentation and management tools, and want to learn how to apply them to a real BIM Project Workflow, primarily using Archicad.

PREREQUISITES

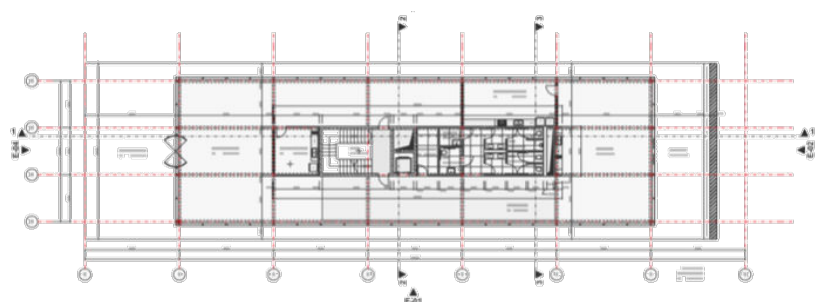
GRAPHISOFT Archicad Essential Skills Training, Archicad BIM Modeling and Archicad Documentation are highly recommended as prerequisite to this training. If you would like to test your knowledge, please complete the [Archicad online test](#) with a minimum score of 40%.

DURATION

2 day (6 hours)



This training will present the best practices for using Archicad tools to model, document, manage and collaborate on a team project. All training activities are based on simulation of a real project, starting with the project kickoff meeting, and the four project stages which follow. All theoretical content will be illustrated with practical examples applied to the training project.



COURSE OUTLINE

Archicad BIM WORKFLOW TRAINING

KICK-OFF MEETING

- + What is BIM?
- + BEP | BIM Execution Plan
- + Project Standards
- + Model Coordination
- + Project Setup

PRE-DESIGN

- + Surveyor's Data Import
- + Modelling the Building Mass
- + Using Worksheets for storing 2D data
- + Adding a Grid System
- + Shaping the Building Volume
- + Creating Zone Areas
- + Managing Design Options
- + Conceptual Presentation

SCHEMATIC DESIGN

- + Creating the load-bearing elements
- + Modeling Architectural Elements
- + More about Layouting
- + Interoperability with IFC

DESIGN DEVELOPMENT

- + Documentation Management
- + Model Coordination
- + Editing Architectural Elements
- + Managing Repetitive Elements

CONSTRUCTION DOCUMENTATION

- + Additional Element Editing
- + Annotations, Dimensioning
- + Detailing Tool
- + Interactive Schedules
- + Revision Management
- + Updating Deliverables
- + Archiving the project file

SOFTWARE REQUIREMENTS

Participant must have access to a computer with the latest Archicad version installed. Valid commercial, trial or educational license of Archicad is required.

NOTE

This course covers a fully detailed workflow with specific solutions. Different solutions may apply for different projects.