

GRAPHISOFT Learn™ **BIM CLASSES**

ARCHICAD DOCUMENTATION

LEARN HOW TO DOCUMENT A BIM MODEL
IN Archicad!

ABOUT BIM DOCUMENTATION

When it comes to BIM everything starts with a 3D digital model of the building. All the information needed for the documentation is created from the 3D model. The content of the documentation varies. It is based on standards, on the BIM Execution Plan or other requirements. Typical parts are the layouts, schedules, detail drawings, sections and elevations.

TRAINING OBJECTIVES

The Archicad Documentation Training provides an overview of the Archicad's Documentation Workflow.

The training includes practical examples and exercises that will allow the participants to learn and absorb the information shared.

WHO SHOULD ATTEND?

Beginner users who have basic Archicad knowledge or/and have already participated in the "Archicad Essential Skills" and the "Archicad BIM Modeling" training. It is also recommended for Intermediate users who want to update their knowledge about Documentation on Archicad.

PREREQUISITES

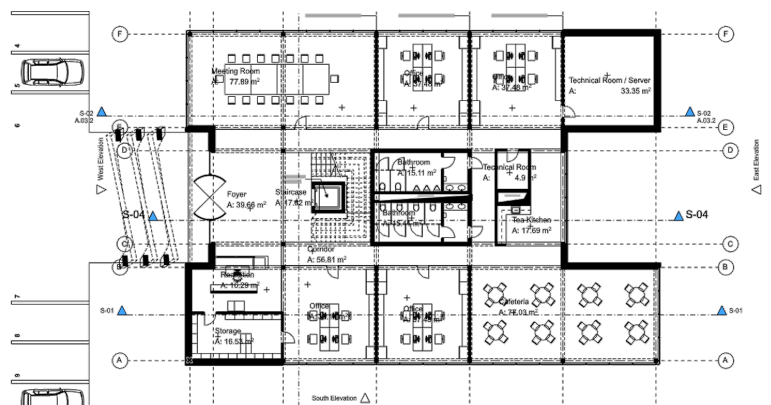
This training requires a basic Archicad knowledge. Taking the Archicad Essential Skills Training and Archicad BIM Modeling are strongly recommended, but not a prerequisite.

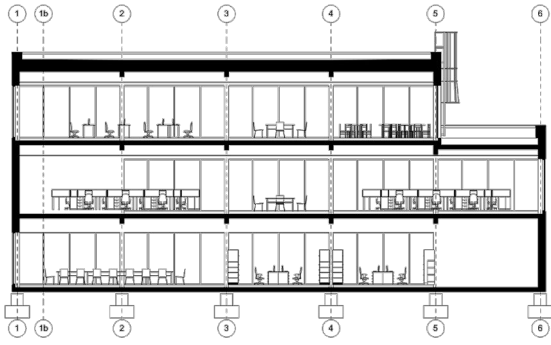
DURATION

2 days (12 hours)



Archicad Documentation Training is providing an overview of the Archicad tools used in project documentation, e.g. Labels, Dimensions, texts. It describes the Layout Book workflow and how to create and update drawings on layouts, and how to publish them in various formats.





COURSE OUTLINE

CINERENDER | Archicad

ARCHICAD MODEL VIEWS

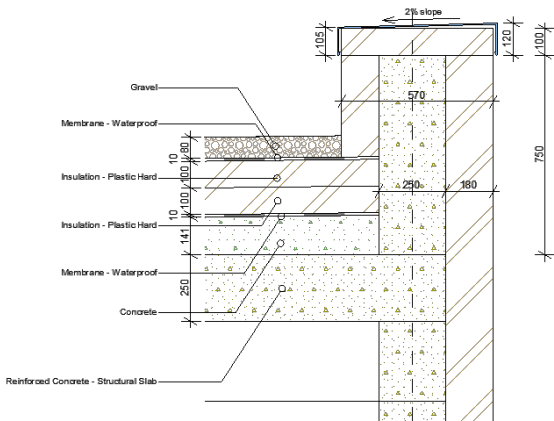
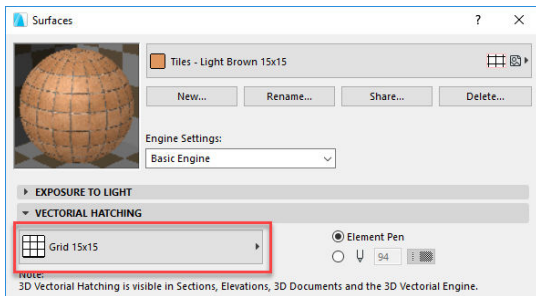
- + Sections and elevations
- + 3D Document
- + 3D Cutaways
- + Details and Worksheets

ANNOTATIONS

- + Labels
- + 2D Annotation tools

NAVIGATION

- + Navigator
- + View Map
- + Layout Book
- + Drawing Manager
- + Publisher



000 Window				
Opening Name	Double Sash Windo...	Double Sash Windo...	Double Sash Windo...	Double Sash Windo...
Quantity	1	1	1	1
W x H Size	2 400x2 000	2 400x2 000	2 400x3 000	2 400x3 000
View from Side Opposite to Opening Side				

SOFTWARE REQUIREMENTS

Participant must have access to a computer with the latest Archicad version installed. Valid commercial, trial or educational license of Archicad is required.

